

Schüco Living Classic

Premium PVC-U window – perfect for your home



SCHÜCO



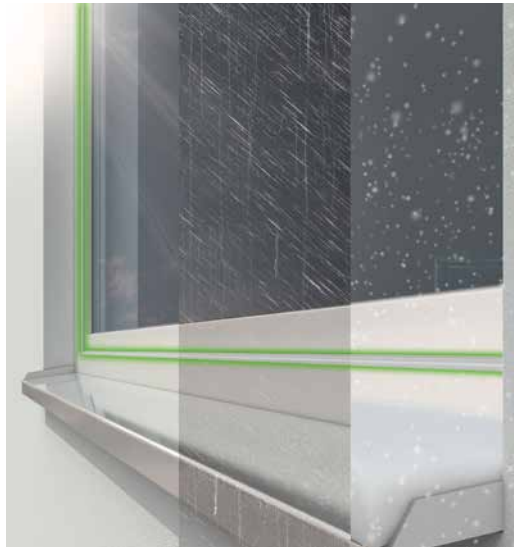
Contents

Comfort	04
Security	06
Energy	08
Design	10
Schüco quality	14
Sustainability	15

SCHÜCO LIVING CLASSIC

Windows to make you feel good

Nowadays, modern PVC-U windows have a service life of over 40 years. This is great when the individual components of the window also function for a long time – such as the window gaskets, for example. They play a significant role in guaranteeing the function of the window. With Schüco Living Classic windows, you get the best quality down to the smallest details.

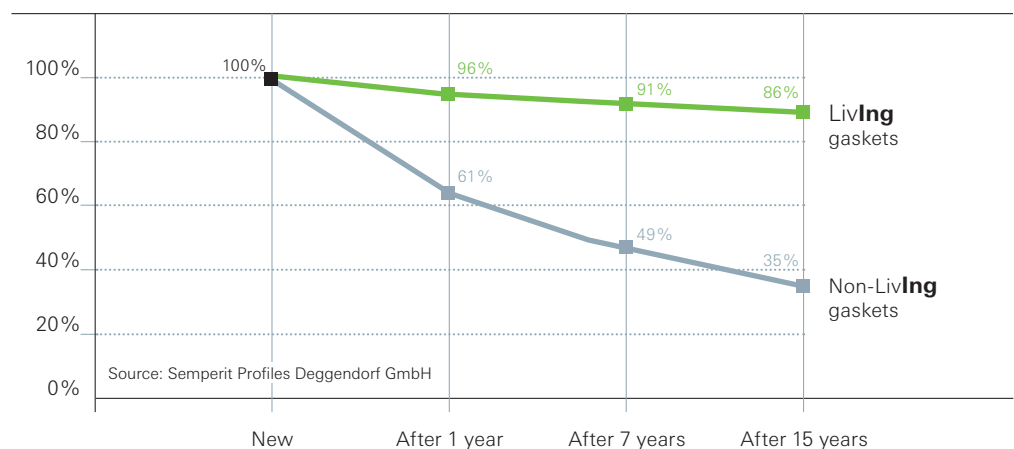


QUALITY DOWN TO THE VERY LAST DETAIL

In window construction, high demands are placed on weathertightness, long-lasting functional performance and weather protection. High-quality gaskets have excellent recovery properties*, which guarantee optimum weathertightness for the lifetime of the window. Time-consuming and expensive gasket replacement is not necessary.

Schüco Living Classic windows are equipped with the latest gasket technology, which produces a maximum sealing effect even in the critical corner area of the window. For you, this means one thing above all – a very comfortable living environment with that feel-good factor.

The comparison of the recovery properties* of Schüco Living gaskets and non-Living gaskets clearly shows that the high-quality material of the Living functional gaskets keeps a tight seal and therefore retains its positive characteristics with regard to protection against draughts, cold, moisture and noise. The alternative gasket loses an enormous amount of elasticity in the first few years and becomes brittle. After approximately 7 years, the sealing effect is down to around 50%.



*Behaviour of a gasket in the event of recurrent compression, e.g. opening and closing of the window. The optimum outcome is a recovery of the original contours, because this is the only way to guarantee a long-lasting tight seal.



ENJOY PEACE AND QUIET

With Schüco LivIng Classic windows, noise disruptions are kept outside. Combined with acoustic glazing, this PVC-U window system and the innovative Schüco LivIng gasket technology offer excellent sound reduction to 47 dB. Feel comfortable within your own four walls, with the stress of disruptive noises, such as the neighbour's lawnmower, the road outside, the building site around the corner or the nearby airport, becoming a thing of the past.

With Schüco LivIng Classic windows, your home is protected from draughts, noise, moisture and cold for decades. So make yourself comfortable and enjoy your new, high-quality living environment.

47 dB 

YOUR WINDOWS VENTILATE BY THEMSELVES

Do away with stuffy rooms, a lack of oxygen and mould growth due to insufficient ventilation. With Schüco LivIng Classic, your windows now ventilate themselves. The Schüco VentoAir, Schüco VentoAir⁺ and Schüco VentoTherm Twist ventilation units offer tailored solutions for the ventilation of your rooms. The concealed window rebate

ventilators Schüco VentoAir and Schüco VentoAir⁺ are self-regulating and provide the required ventilation for the room. The Schüco VentoTherm Twist electric ventilation system provides continuous air exchange with an integrated pollen filter. Draughts and noise disturbances are therefore a thing of the past.



Schüco VentoAir

Schüco VentoAir⁺

Schüco VentoTherm Twist (in collaboration with Renson®)

SCHÜCO LIVING CLASSIC

That feeling of protection

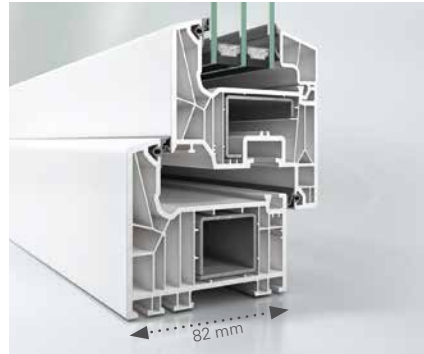
To feel safe and secure at home at all times, it is worth investing in your own security from the outset. Schüco Living Classic windows are available with state-of-the-art locking systems and a range of fittings options, so that your home can meet your personal security needs.





PROTECTED DAY AND NIGHT

With Schüco LivIng Classic windows, we can help you feel safe and secure by making life hard for burglars and thieves thanks to sophisticated technology. In addition to the high level of resistance of the material PVC-U, windows from the Schüco LivIng PVC-U system offer an above-average basic depth with well-concealed fittings. This gives thieves fewer points of attack for their endeavours. Modern fittings technology with mushroom head locking points and steel fittings make it virtually impossible to lever out the window. It is also highly unlikely that the fittings can be drilled out of toughened steel. So you can rest easy at all times.



A high level of basic security: The increased basic depth and well-concealed fittings move the lock components out of the reach of burglars.

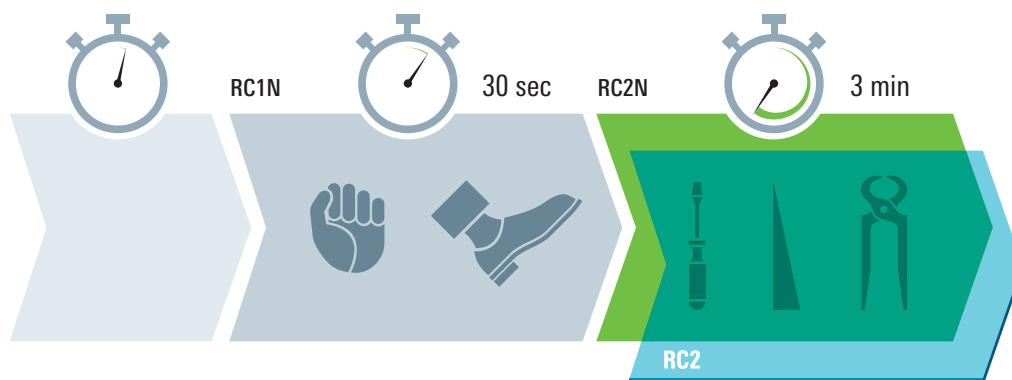


Optional lockable handles allow the vent to be closed securely.

BURGLAR RESISTANCE TO SUIT YOUR REQUIREMENTS

The resistance class (RC), which is defined by European standards, tells you how effectively a window protects against break-in attempts. The legally standardised resistance classes set out how long windows or doors are able to withstand forced entry attempts using vari-

ous tools. If a break-in attempt lasts longer than a minute, many burglars give up out of fear of being discovered. Therefore, the higher the resistance class, the better the protection against break-ins.



Without additional protection, thieves have it easy.

The basic security level offers good protection against break-in attempts.

Better protection against break-in attempts using simple tools. With additional safety glass, resistance class RC 2 is achieved.

SCHÜCO LIVInG CLASSIC

Outstanding energy balance

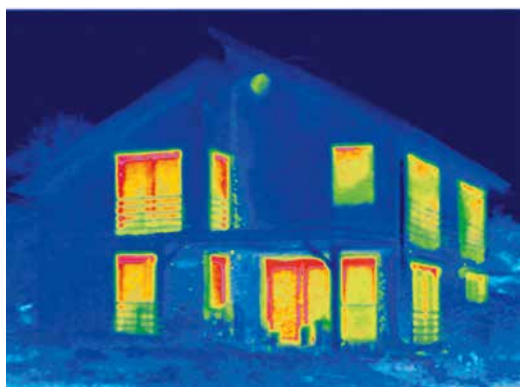
The heat stays in, the cold stays out. Seven chambers inside the frame profile enable thermal insulation to passive house level to be achieved, which was previously only feasible with laborious additional measures.

With Schüco LivIng Classic windows, you can considerably lower your energy requirements by replacing your old windows with new ones. This means that, in addition to saving on heating oil, you will also reduce your carbon footprint. So you are saving energy and therefore heating costs – and helping protect the climate in the process.

Very good thermal insulation properties make Schüco LivIng Classic the best choice for warmth and comfort, because there is no noticeable drop in temperature of the frame on the inside below the temperature of the interior, even in the depths of winter. Draughts and condensation are therefore effectively and permanently avoided. In addition, almost no heat energy is lost through the glass surfaces. However, valuable heat from the sun does penetrate through the window areas to the inside.



- 1 Individual glazing options for insulating glass and special function glazing with a thickness of between 16 mm and 54 mm
- 2 The Classic vent geometry with clean, timeless lines fulfils the requirements of modern architecture
- 3 Gaskets in two planes provide reliable protection from wind, rain and noise
- 4 Slim face widths for maximum light penetration and high solar energy gains
- 5 7-chamber profile system with excellent thermal insulation properties for U_f values as low as $1.0 \text{ W}/(\text{m}^2\text{K})$



Infra-red photos – thermal imaging – clearly show where energy is lost from a house. Red indicates heat and hence high energy loss.



Thermal imaging shows the major energy benefits of investing in carefully installed new windows from the Schüco Living window system. Almost all of the original energy losses are completely avoided.



- 6 Gaskets in three planes provide optimum protection against wind, rain and noise
- 7 7-chamber profile system with outstanding thermal insulation properties for U_f values as low as $0.96 \text{ W}/(\text{m}^2\text{K})$



Schüco Living Classic has been awarded the Vinyl verified label. The VinylPlus® product label is the sustainability seal for PVC construction products. This makes it easy for clients to identify products that feature high performance and sustainability.

Schüco Living Classic 82 MD with gaskets in three planes

SCHÜCO LIVING CLASSIC

Maximum design freedom

Visibly individual: Schüco Living Classic windows combine functionality and timeless design. A harmonious ensemble with a range of shapes and colour options to lend every home an unmistakable style.





300+

INDIVIDUAL DESIGN FOR YOUR SCHÜCO LIVING CLASSIC WINDOWS

The Schüco UnlimitedFinish range of foils with over 300 metallic and single colours, and woodgrain finishes, offers a variety of options to suit every taste. Windows do not just shape the façade, they also have a major influence over the atmosphere inside the building. You can choose different colours for the

inside and outside surfaces of your Schüco Living Classic frames, allowing you to match your personal interior design style on the inside, while creating different colour accents on the outside.

SELECTED by Schüco

The latest on-trend foils from the Schüco Selected Edition promise a very special look. They not only impress with their high-quality surface appearance, but also with their unparalleled feel.



PERFECTLY COORDINATED DESIGN FOR YOUR NEW WINDOWS



Elegant handles and fittings made from durable materials effectively complete the look of your windows. The standard Schüco handle range can be seen here.



In keeping with the architectural trend for different shades of grey, Schüco LivIng Classic is also available made from grey PVC-U. This ensures a harmonious look, particularly when the window is open.



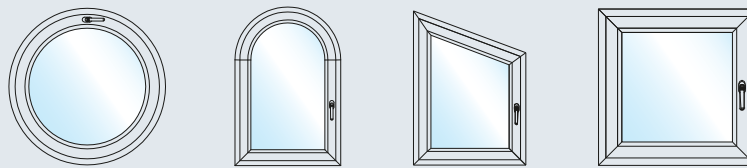
RANGE OF SHAPES FOR AN INDIVIDUAL FAÇADE DESIGN

Whether triangular or round-arched, windows do not always need four sides. With Schüco LivIng Classic, you can design your windows according to your personal tastes and requirements. Stylistic elements like glazing bars and glazing beads allow you to set additional accents and turn your new windows into an eye-catching feature.

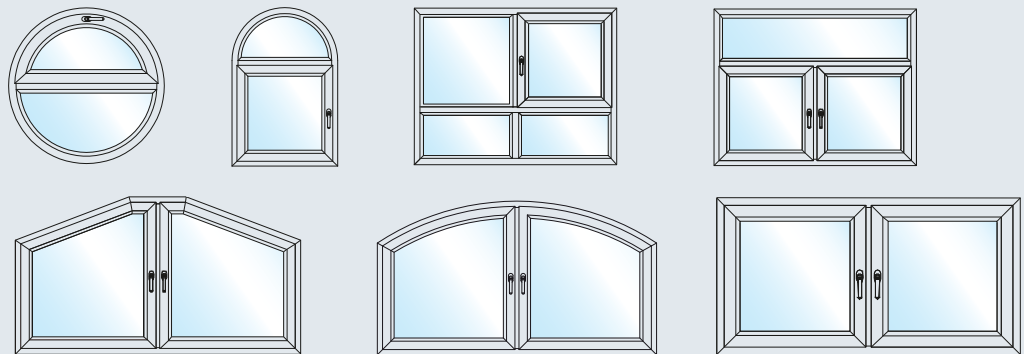
Let us inspire you with Schüco LivIng Classic solutions.
Take the 360° home tour here!
www.schueco-homes.com



Single-part windows and window doors



Multi-part windows and window doors



DESIGN OPTIONS THAT DEFINE THE OVERALL LOOK OF THE FAÇADE



Portrait, rectangular windows without glazing bars emphasise the natural light penetration.



Horizontally arranged glazing bars highlight the horizontal lines and create an impression of greater width.



With vertical glazing bar divisions, you can achieve a delicate structuring of the window areas for an elegant look.

SCHÜCO LIVING CLASSIC

Made in Germany

There are many good reasons to choose Schüco Living Classic PVC-U windows – one of which is the premium quality of Schüco systems. All of the Schüco PVC-U systems are developed and produced in Germany at the Weißenfels site. The PVC-U used meets the highest quality requirements, is environmentally friendly, calcium/zinc stabilised, fade, weather and impact-resistant, and extremely resistant to deformation even at higher temperatures. Fittings and handles are sealed against corrosion. This means the level of maintenance required and hence the follow-up costs for servicing Schüco Living Classic windows are reduced to a minimum.



SCHÜCO LIVING CLASSIC

Energy-efficient and sustainable

360° sustainability – from the idea to recycling: Sustainability is an integral part of the Schüco corporate culture. To this end, Schüco develops high-quality and energy-efficient products and services that conserve resources, set standards and enable Schüco partners to create reliable and long-lasting values.

In the construction sector, sustainability means designing, constructing and operating a building in such a way that it is ecologically, economically and socio-culturally future-proof. High-quality and innovative products and solutions which conserve resources are therefore required.

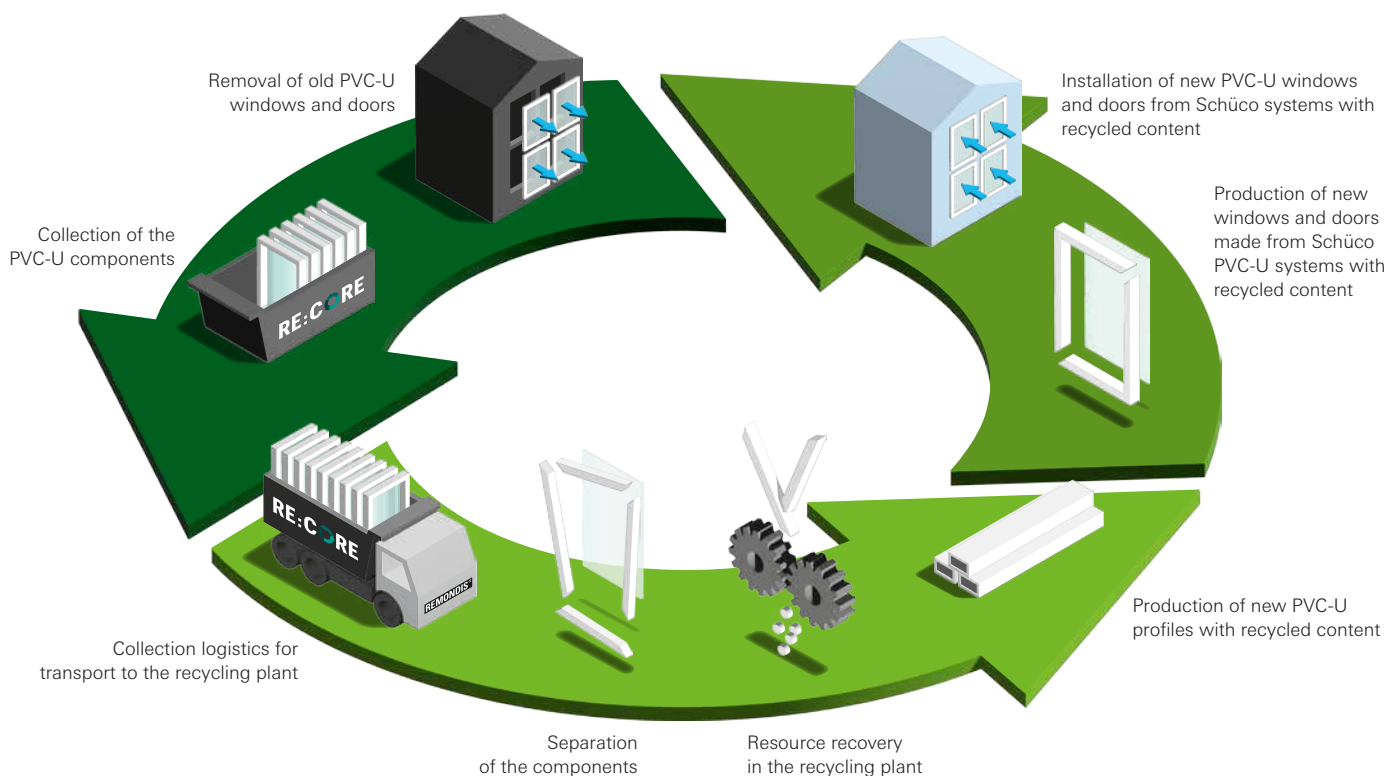
Schüco systems are also designed to have a high degree of:

- Serviceability
- User comfort
- Energy efficiency
- Climate protection


Rewindo
RE:CORE

With the versatility of the Schüco PVC-U systems, carbon emissions are reduced through energy efficiency, thereby conserving natural resources. All Schüco PVC-U systems are also fully recyclable. We fulfil our specific tasks with regard to climate and environmental protection through

our commitment to Rewindo and our recycling partner RE:CORE. In doing so, we ensure that windows and doors are recycled after use and the recovered raw materials are fed back into the production process – with no loss of quality.



But that's not all – we also reduce our energy requirements during the actual production process by means of numerous measures, such

as state-of-the-art energy-saving machinery technology and sustainable production halls.



Schüco Living Classic

Schüco Living Classic Premium PVC-U window – from your Schüco partner

Expect the best from us. In consultancy, planning and execution. We will gladly help you to select the perfect windows for your home and provide you with expert advice for all queries relating to:

- Surface finish and colour selection
- Safety and security features
- Thermal insulation
- Accessories

Visit us at one of our showrooms. We would be delighted to show you our reference projects and talk to you in detail about the work we do.

Schüco – System solutions for windows, doors and façades

Based in Bielefeld, the Schüco Group develops and sells system solutions for the building envelope made from aluminium, steel and PVC-U. The product range includes window, door, façade, ventilation, security and sun shading systems as well as smart and networked solutions for residential and commercial projects. Schüco also offers consultation and digital solutions for all phases of a building project – from the initial idea, design, fabrication and installation all the way through to the after-sales service including maintenance and servicing. Fabrication machinery and excellent customer service complement the product range. As a leading company in the construction industry, Schüco is committed to being a pioneer in holistic sustainability and using its products and services to make an active contribution towards achieving climate neutrality and a circular economy in the building trade. Founded in 1951, Schüco is now active in more than 80 countries with 6750 employees.

For more information, visit www.schueco.com

Schüco Polymer Technologies KG

www.schueco.com

Follow us:



The "Schüco" logo and other logos are protected in Germany and various international markets. Detailed information is available upon request.

P415/EN11:24/Printed in Germany.
We reserve the right to make changes and to correct errors. Products may differ from illustrations.

